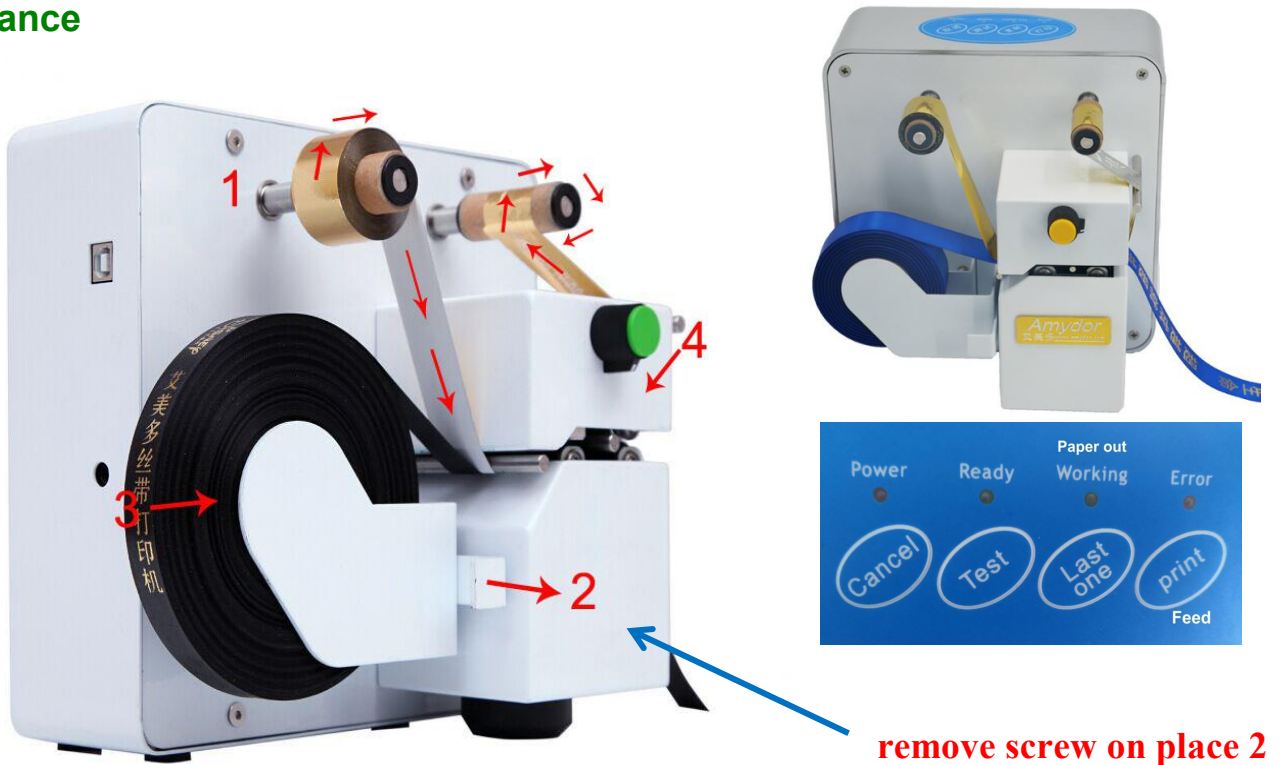


Amydor Digital Ribbon Foil Printer-AMD320

User Manual

I. Apperance



II. Technical Parameters

Model	AMD320
Printing Method	Direct thermal or heat transfer method
Max printing Width	40mm
Feeding width	6mm-40mm
Software Operating Environment	Windows systems XP, Win 7, Win 8, Win 10
Interface	USB
Power Supply	AC100~240V, 50/60Hz
Max Power Consumption	60W
Packing size	210*150*210mm/ 29cm*29cm*28cm
G.W./N.W.	5.5kg / 4.5kg

Features:

- * digital plateless printing
- * real USB output, performance is stable.
- * Support all the global graphic design software, eg. CoreIDRAW, Adobe Illustrator, Adobe Photoshop, etc.
- * using the best print head Japan Rohm ---- high precision thermal print head, high quality assurance.
- * The foil printer stores last file for next time offline printing. (Key of last one is copy function)

Note: key of Test is only for testing by manufacturer.

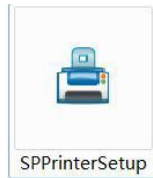
III. Operating guide.

1. Prepare work

- 1). Install the foil roll according to red arrows direction. Foil shine side is upward, not shine side is downward.
- 2) pull open the ribbon roll clip
- 3) install the ribbon roll
- 4) fasten the green screw clockwise.
- 5) Switching on power and connect printer with computer by USB cable.

2. Install printer driver on computer, suitable for Windows XP, Win 7, Win 8, Win 10, close the antivirus software temporarily will be helpful to install driver successfully. Switching on power and connect printer with computer by USB cable. Take a Windows XP system computer as an example:

1) find the printer driver progress as follow:

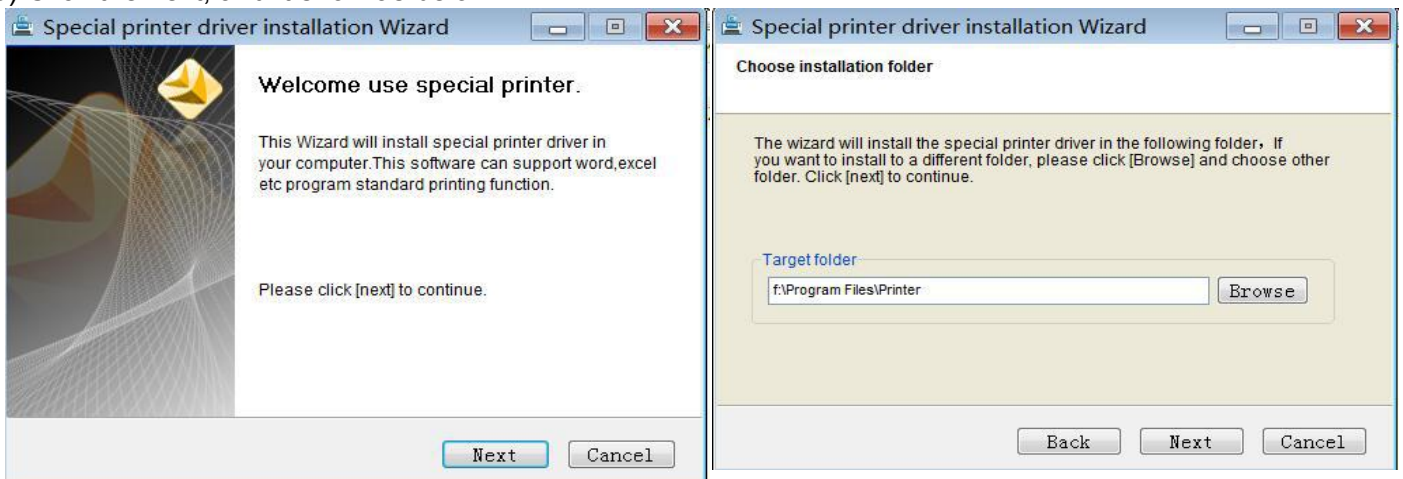


on the disk, double-click to start installing interface

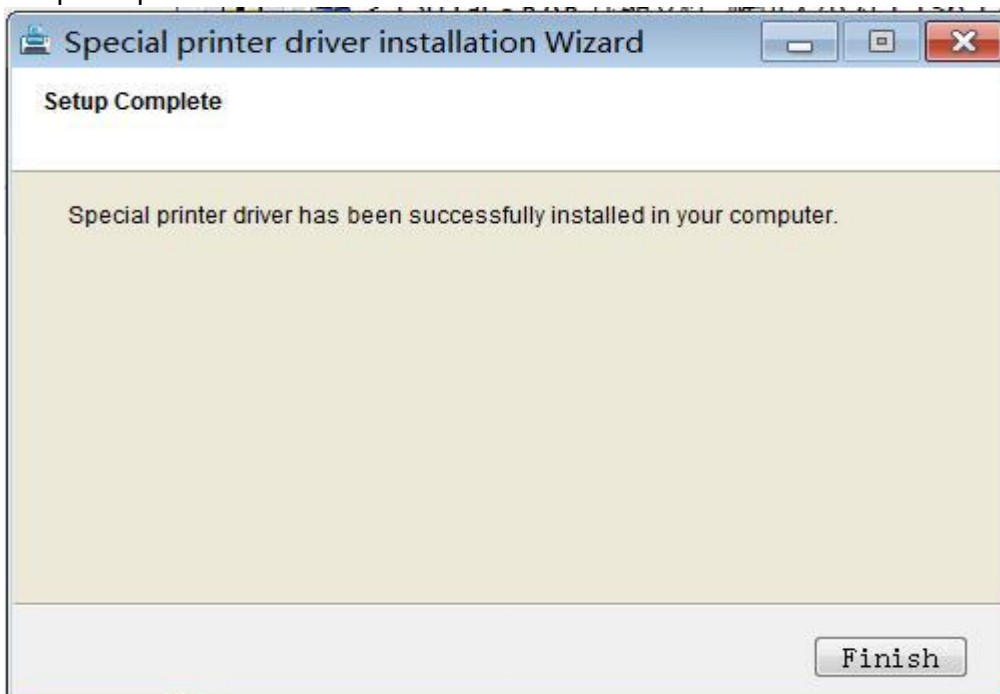
2) choose language: Chinese or English



3) Click the next, and it show as below:



4) Setup complete

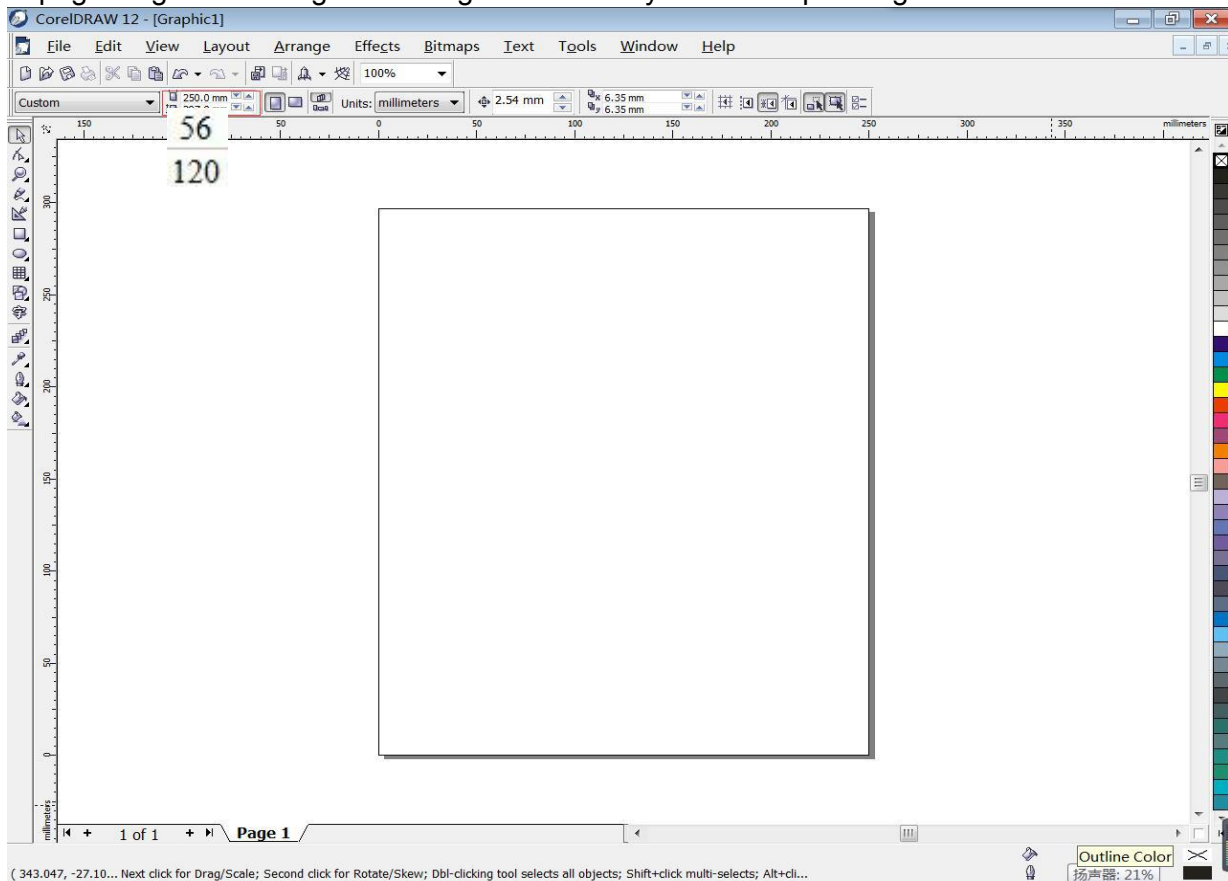


3. Design layout by Coreldraw, then print output.

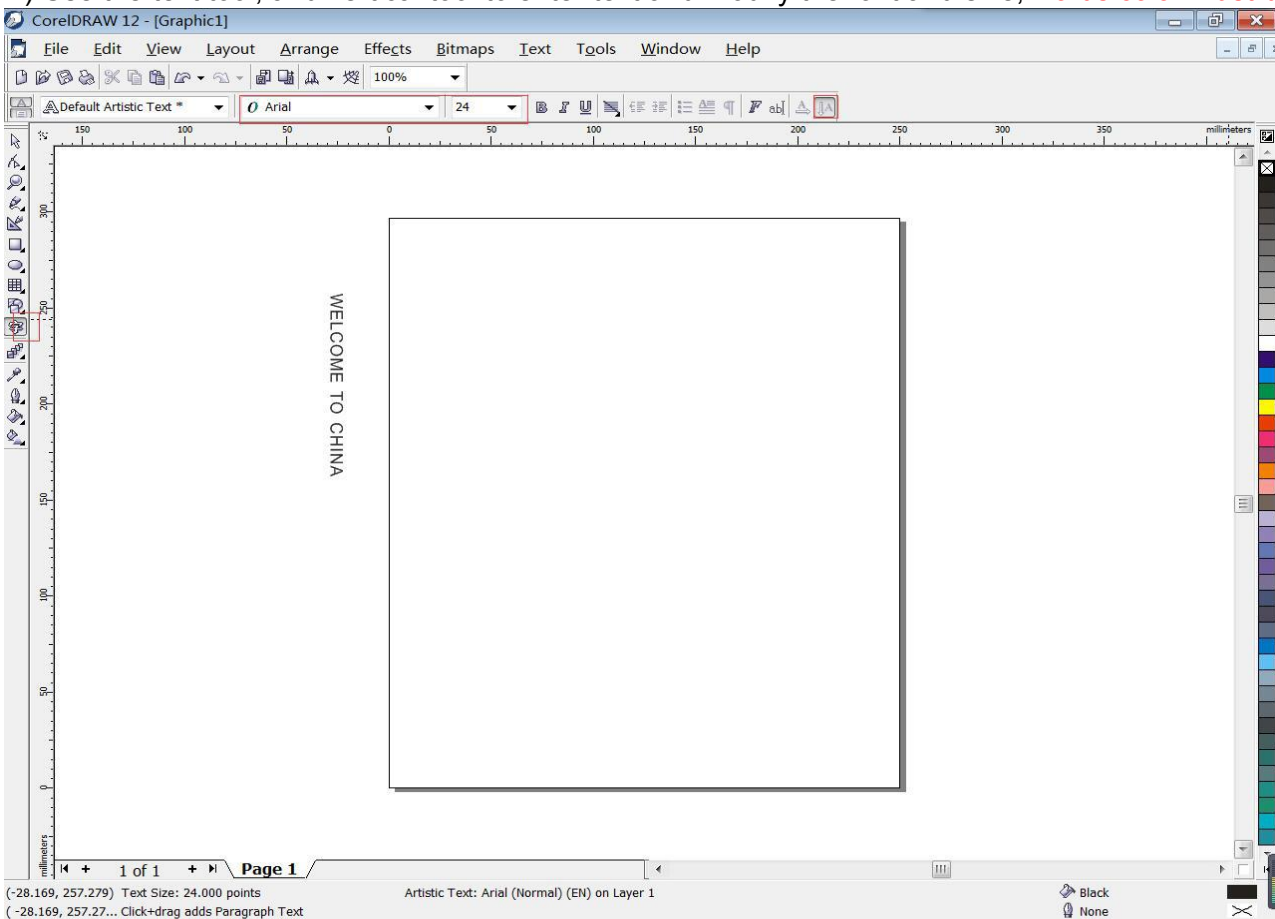
Support all the global universal graphic design software, such as CoreIDRAW, Adobe Illustrator, Adobe Photoshop, etc. Take CoreIDRAW for example as follows:

1) Set page width 56mm (width is default)

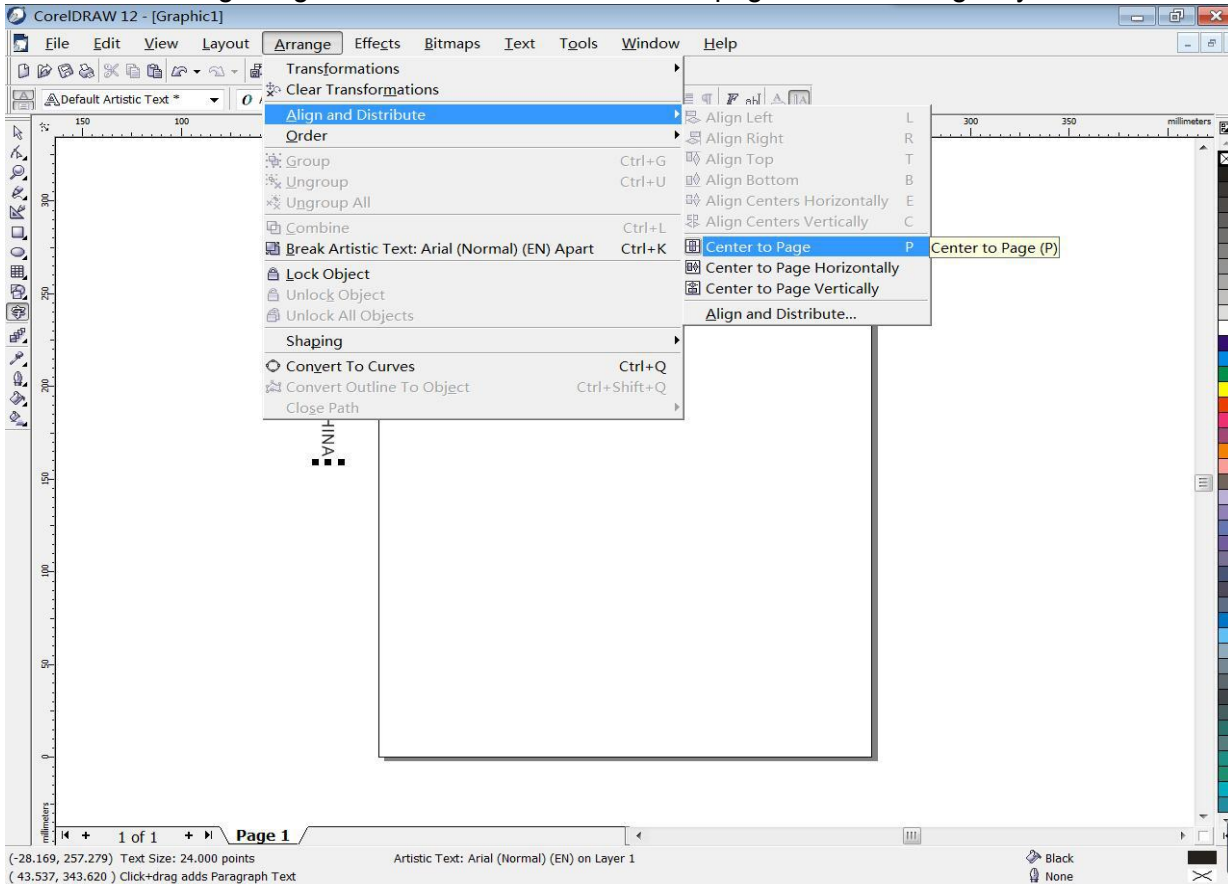
set page length according to the length of content you want to print. eg. we set 56*120mm.



2) Use the text tool, and vertical tool to enter text and modify the font and size; words color must be black.

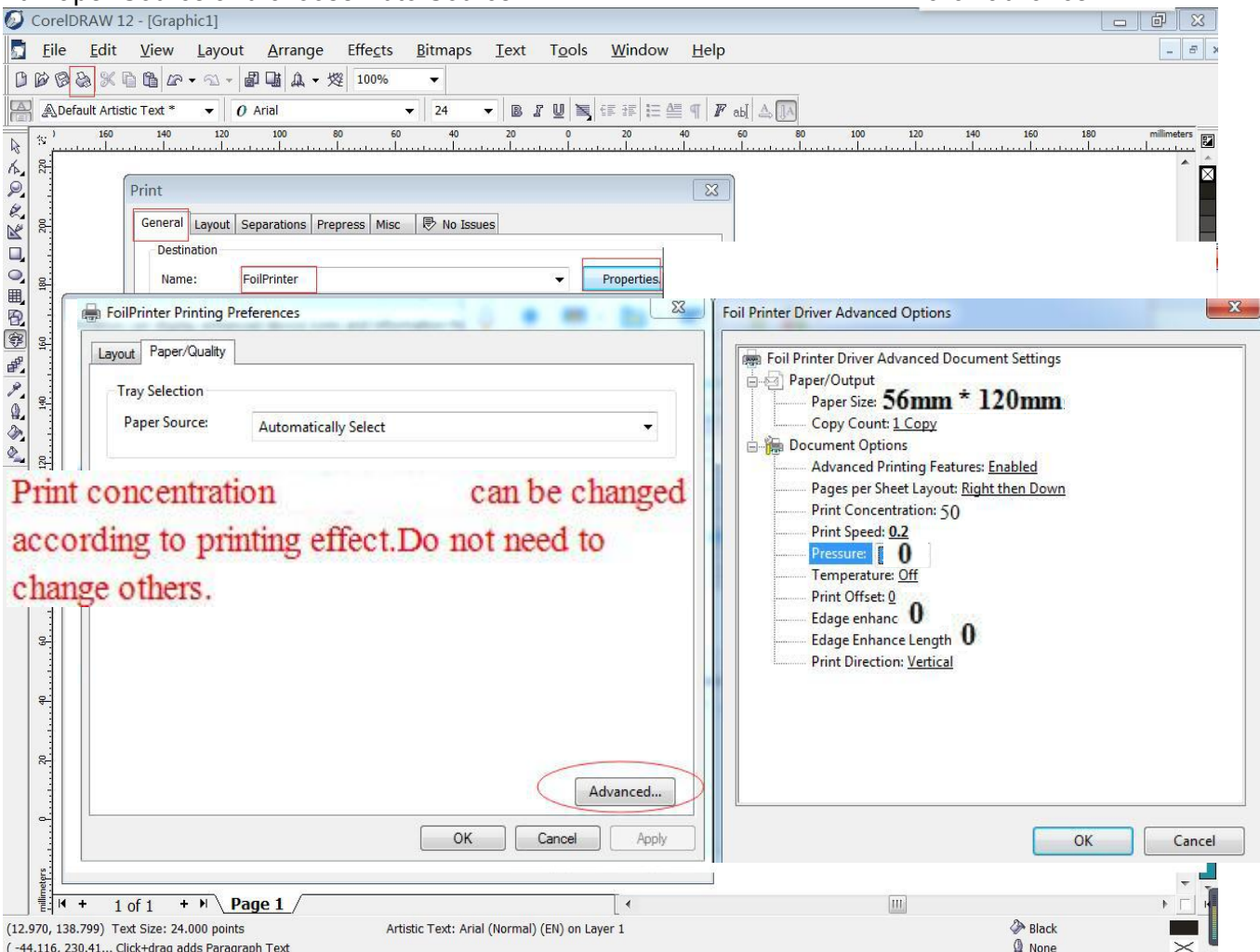


3) Then click Arrange-Align & Distribute-Centered on the page to finish design layout.



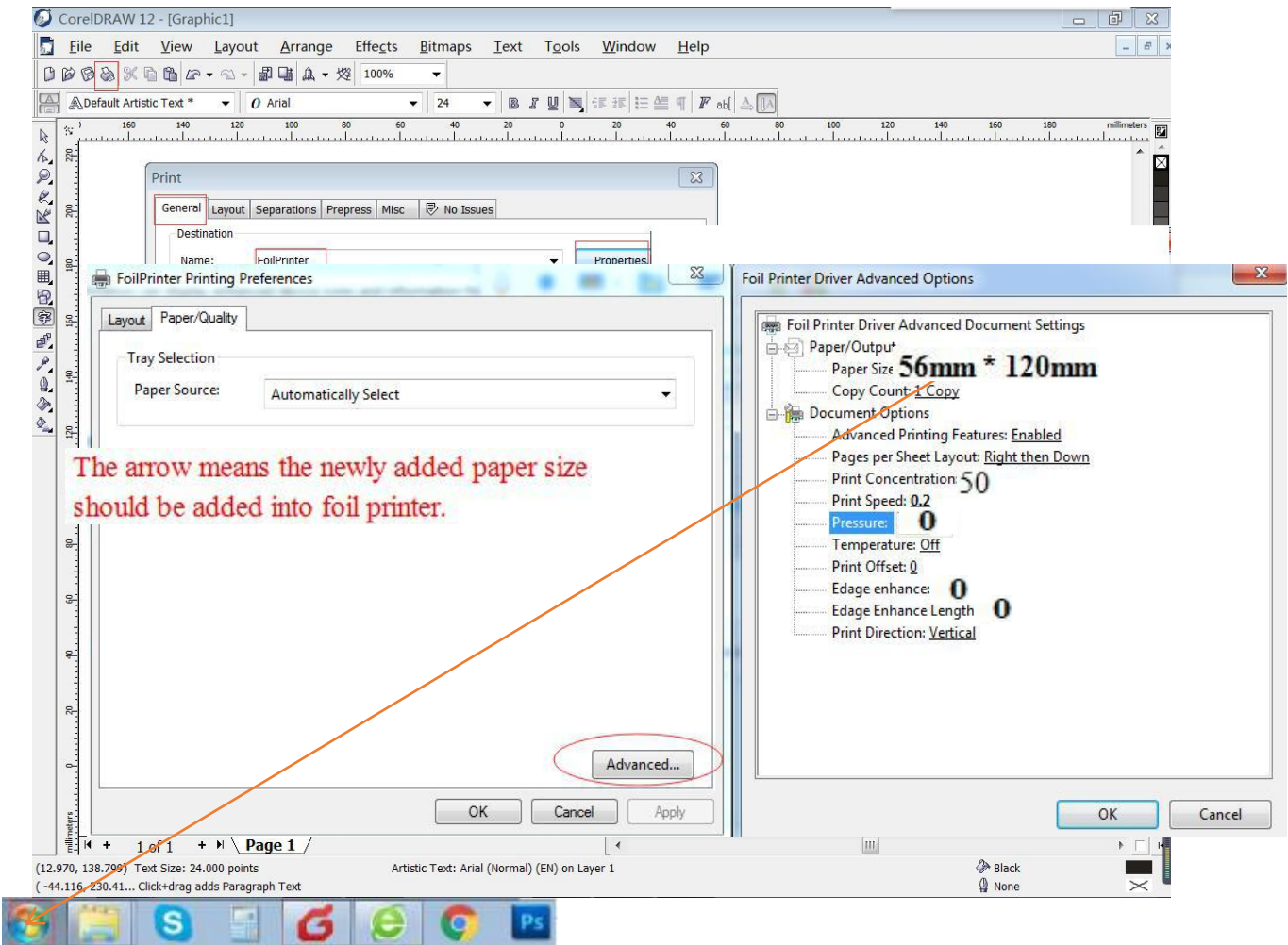
4) Click print button, choose right driver-- foil printer, click properties, find Paper Source and choose Auto Source

click advance



5) Set paper size, paper size must be setted same with page size in coreldraw, 56mmx120mm.

Procedures are as follows:



Click Start- find Devices and Printers

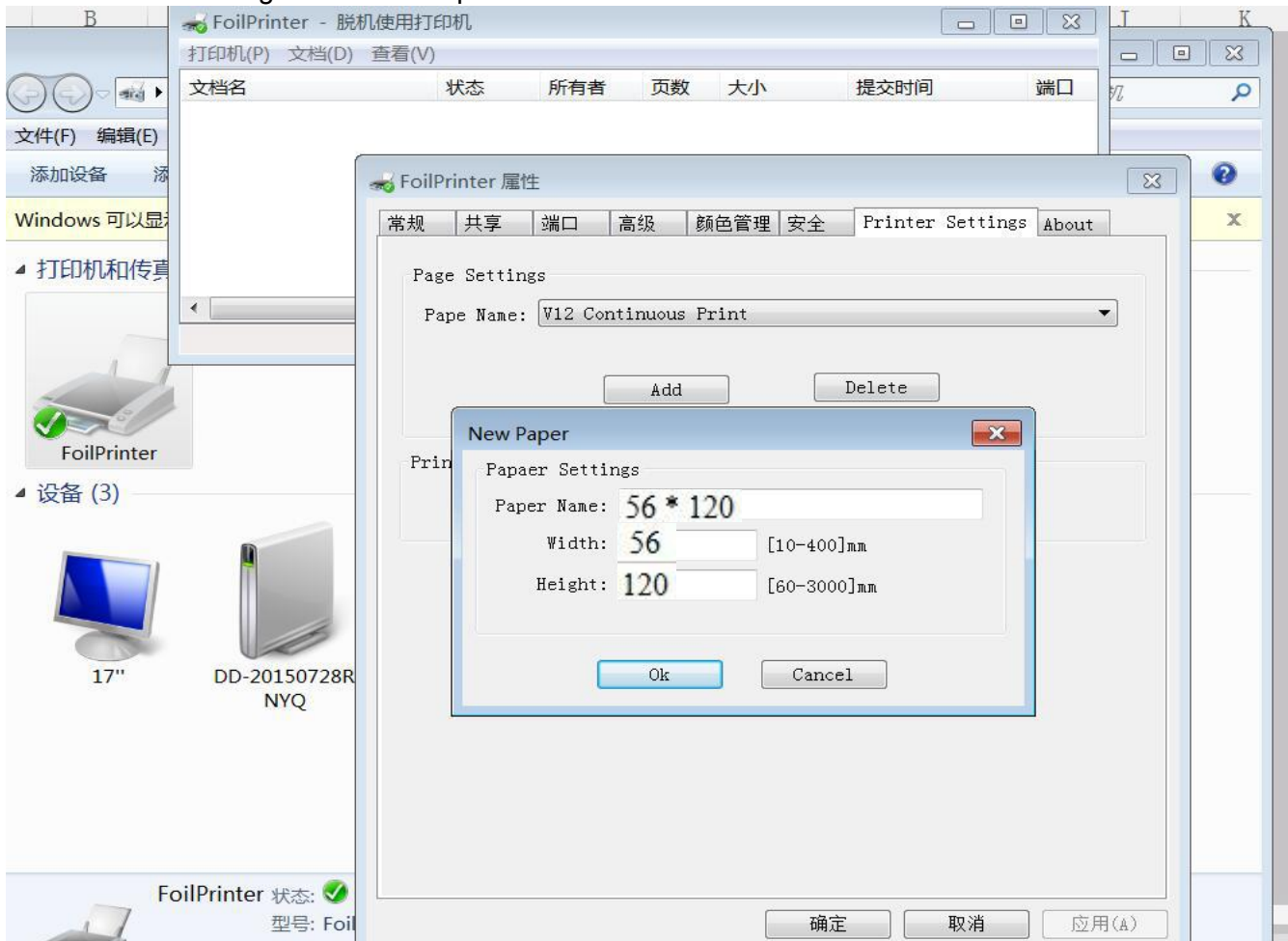
Click Devices and Printers, find Foil printer



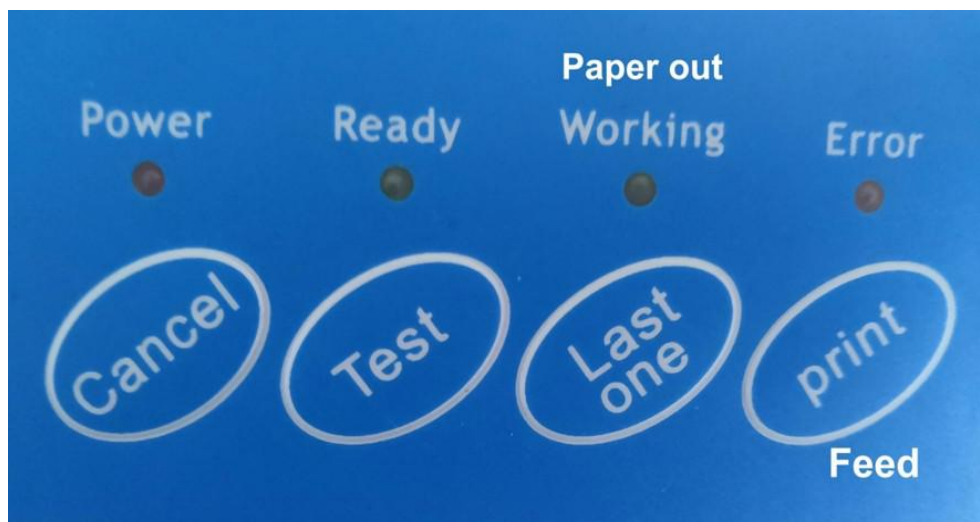
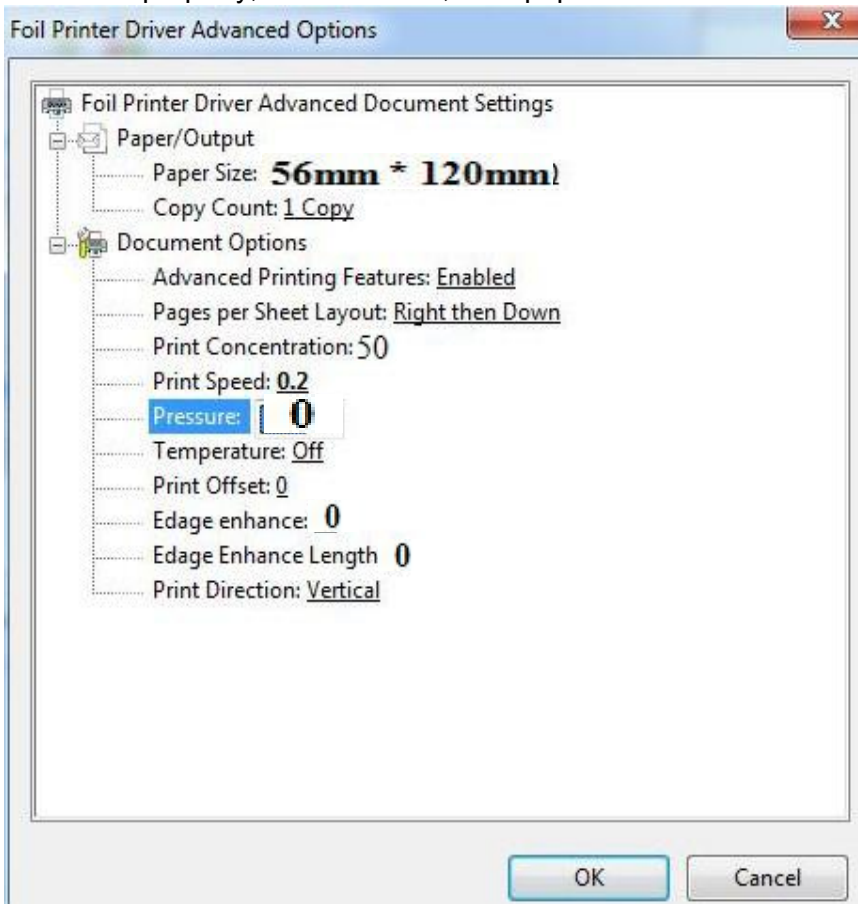
Double-click foil printer, find Printer, click it and find Property



Choose Printer settings-Add-New Paper-56*120-56-120-OK



6) Back to click property, then advance, then paper size choose 56*120mm.



Okay, all print settings have been finished, then preview and print out.

7) After printer receives print command from computer, it has memory function.

If click the Last one button, then print/feed button, one copy of layout will be printed out.

If click the Test button more than 3 seconds, more copies of layout will be printed.

If you want to stop, just click the "Cancel" button, the print job will stop.